



Journal of Pharmaceutical and Biological Research

ISSN: 2347-8330 | CODEN (USA): IJCPNH | Publisher: Pharma Research Library

Home Page: <https://pharmaresearchlibrary.org/journals/index.php/jpbr>

DOI: <https://doi.org/10.30904/j.jpbr.2023.4565>

J. Pharm. Bio. Res., 2023; 11(1): 30–34



Analytical Method Development and Validation for the Simultaneous Estimation of Teneigliptin and Metformin by RP-HPLC Method

Annam Naga Durga Lakshmi Rishitha*, Gope Edward Raju, Vaddi Lakshmi Priya, Doonaboyina Raghava, Kavala Nageswara Rao

Department of Pharmaceutical Analysis, K.G.R.L College of Pharmacy, Bhimavaram-534201, Andhra Pradesh, India

ABSTRACT

A new method was established for simultaneous estimation of Teneigliptin and Metformin by RP-HPLC method. The chromatographic conditions were successfully developed for the separation of Teneigliptin and Metformin by using X BRIDGE C18 column (4.6×50mm)3.7μ, flow rate was 1ml/min, mobile phase ratio was (40:20:40 v/v) methanol : Acetonitrile : phosphate buffer(KH₂PO₄and K₂HPO₄)phosphate pH 3 (pH was adjusted with orthophosphoricacid), detection wavelength was 290nm. The instrument used was WATERS HPLC Auto Sampler, Separation module 2695, photo diode array detector 996, Empower-software version-2. The retention times were found to be 2.191 mins and 3.868 mins. The % purity of Teneigliptin and Metformin was found to be 104.4% and 103.39% respectively. The system suitability parameters for Teneigliptin and Metformin such as theoretical plates and tailing factor were found to be 993, 1.23 and 5775, 1.12, the resolution was found to be 10.18. The analytical method was validated according to ICH guidelines (ICH, Q2 (R1)). The linearity study of Teneigliptin and Metformin was found in concentration range of 50μg-250μg and 5μg-25μg and correlation coefficient (r²) was found to be 0.999 and 0.999, % recovery was found to be 99.56% and 99.48%, %RSD for repeatability was 0.1 and 1.4, % RSD for intermediate precision analyst 1 was 0.5 and 0.6 and intermediate precision analyst 2 was 0.4 and 0.4 respectively. The precision study was precision, robustness and repeatability. LOD value was 0.39 and 0.7 and LOQ value was 1.18 and 2.12 respectively.

Keywords: X BRIDGE C18 column, Teneigliptin and Metformin, RP-HPLC, Methanol.

ARTICLE INFO

Corresponding Author

Annam Naga Durga Lakshmi Rishitha
Department of Pharmaceutical Analysis,
K.G.R.L College of Pharmacy,
Bhimavaram-534201, A.P, India

Article History

Received 22 May 2023
Revised 18 June 2023
Accepted 14 July 2023
Published 02 Sept 2023

Copyright© 2023 The Contribution will be made Open Access under the terms of the Creative Commons Attribution-NonCommercial License (CC BY-NC) (<http://creativecommons.org/licenses/by-nc/4.0>) which permits use, distribution and reproduction in any medium, provided that the Contribution is properly cited and is not used for commercial purposes.

Citation: Annam Naga Durga Lakshmi Rishitha, et al. Analytical Method Development and Validation for the Simultaneous Estimation of Teneigliptin and Metformin by RP-HPLC Method. J. Pharm. Bio. Res., 2023, 11(1): 30-34.

CONTENTS

1. Introduction.....	30
2. Methodology.....	31
3. Results and Discussion.....	31
4. Conclusion.....	33
5. References.....	33

1. Introduction

Teneigliptin has been investigated for the treatment of Type 2 Diabetes Mellitus. Metformin is a biguanide anti-hyperglycemic agent and first-line pharmacotherapy used in the management of type II diabetes.

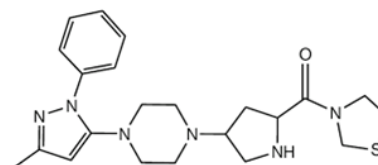


Fig.1.Teneigliptin

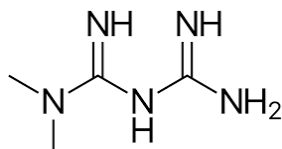


Fig.2.Metformin

2. Methodology

The instrument used was HPLC-auto sampler –UV detector Separation module 2695, UV. Detector 2487, Software - Empower-software version-2. The stationary phase used was Inertsil (250×4.6mm, 5µ) ODS C-18 RP-column Digital weighing balance-Model number BSA224SCW (Ascotet), Sonicator (EnerTech)-SE60US, pH meter Model number AD102U.

Materials and reagents

Teneligliptin and Metformin were gift samples provided by Hetero Laboratories, Hyderabad, Ortho phosphoric acid,

Potassiumdihydrogen, Methanol and Water for HPLC were supplied by Merck India Ltd, Mumbai.

Method development

Five trials were made by changing the mobile phase ratios and solvents MeOH: H₂O (60:40% v/v) ACN: Methanol (40:60% v/v) ACN: pH 4 buffer (70:30% v/v) ACN: pH 3 buffer (65:35% v/v) Methanol: Sodium acetate buffer (70: 30 % v/v). Finally, the mobile phase was optimized to Methanol: Sodium acetate buffer (70: 30 % v/v).

Chromatographic conditions

The chromatographic conditions were successfully developed for the separation of Teneligliptin and Metformin by using X BRIDGE C18 column (4.6×50mm) 3.7µ, flow rate was 1ml/min, mobile phase ratio was (40:20:40 v/v) methanol: Acetonitrile: phosphate buffer (KH₂PO₄ and K₂HPO₄) phosphate pH 3 (pH was adjusted with orthophosphoric acid), detection wavelength was 290nm.

3. Results and Discussion

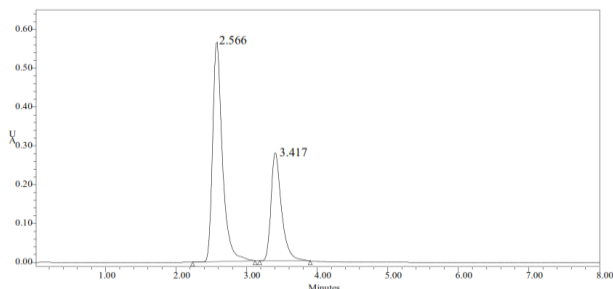


Figure 3 Chromatogram showing standard injection

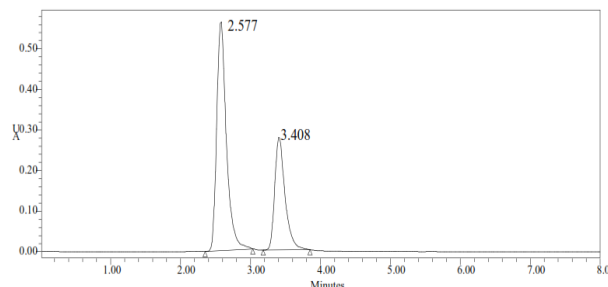


Figure 4 Chromatogram showing sample injection

Table 1 Linearity Results for Teneligliptin

S.No	Linearity Level	Concentration	Area
1	I	5 ppm	471543
2	II	10 ppm	656277
3	III	15 ppm	794999
4	IV	20 ppm	946124
5	V	25 ppm	1002139
Correlation Coefficient			0.999

Table 2 Linearity Results for Metformin

S.No	Linearity Level	Concentration	Area
1	I	5 ppm	441543
2	II	10 ppm	6562771
3	III	15 ppm	794899
4	IV	20 ppm	946134
5	V	25 ppm	1012139
Correlation Coefficient			0.999

Table 3 Showing accuracy results for Teneligliptin

% Concentration (at specification level)	Average area	Amount added (mg)	Amount found (mg)	% Recovery	Mean recovery
50%	2630409	5	4.96	99.91%	99.56%
100%	5277055	10	9.98	99.18%	
150%	7514836	15	15.02	99.60%	

Table 4 Showing accuracy results for Metformin

% Concentration (at specification level)	Average area	Amount added (mg)	Amount found (mg)	% Recovery	Mean recovery
50%	1366666	0.5	0.99	99.53%	99.47%
100%	2777487	1.0	1.05	99.38%	
150%	4151234	1.5	1.495	99.52%	

Table 5 Showing% RSD results for Teneigiptin

Peak Name: Teneigiptin

	Peak Name	RT	Area	Height (μ V) 1
	Teneigiptin	2.755	5223559	541538.3
2	Teneigiptin	2.687	5208511	485548.5
3	Teneigiptin	2.632	5323569	574440.4
4	Teneigiptin	2.612	5259147	557413.5
5	Teneigiptin	2.616	5273463	565020.1
Mean			5257650	
Std. Dev.			45206.4	
% RSD			0.86	

Table 7 Showing results for intermediate precision of Teneigiptin

Peak Name: teneigiptin

	Peak Name	RT	Area	Height (μ V)
1	teneigiptin	2.756	5698542	539568.1
2	teneigiptin	2.688	5682534	536985.4
3	teneigiptin	2.633	5695846	539584.1
4	teneigiptin	2.613	5689452	534569.8
5	teneigiptin	2.617	5636591	534985.5
Mean			5600593	
Std. Dev.			203577.3	
% RSD			0.44	

Table 6 Showing %RSD results for Metformin

Peak Name: metformin

	Peak Name	RT	Area	Height (μ V) 1
	metformin	3.616	2742453	238643.4
2	metformin	3.634	2762750	271543.5
3	metformin	3.460	2797670	281711.6
4	metformin	3.446	2793578	274499.8
5	metformin	3.437	2778483	276713.0
Mean			2774987	
Std. Dev.			22806.9	
% RSD			0.82	

Table 8 Showing results for intermediate precision of Metformin

Peak Name: metformin

	Peak Name	RT	Area	Height (μ V) 1
	metformin	3.617	2624315	231325.6
2	metformin	3.635	2623598	231315.4
3	metformin	3.461	2623541	231250.1
4	metformin	3.447	2624987	231342.6
5	metformin	3.438	2635698	231765.2
Mean			2626428	
Std. Dev.			5215.78	
% RSD			0.19	

Table 9 Showing results for Limit of Detection

Drug name	Standard deviation(σ)	Slope(s)	LOD(μ g)
Teneigiptin	373625.50	581075863	3.17
Metformin	5772.40	476579210	0.0172

Table 10 Showing results for Limit of Quantitation

Drug name	Standard deviation(σ)	Slope(s)	LOQ(μ g)
Teneigiptin	372727.80	574265980	5.80
Metformin	5761.30	478828490	0.212

Table 11 Showing system suitability results for Teneigiptin

S. No	Flow rate (ml/min)	System suitability results	
		USP Plate Count	USP Tailing
1	0.8	5339	1.4
2	1	4668	1.3

3	1.2	5216	1.4
---	-----	------	-----

Table 12 Showing system suitability results for Metformin

S.No	Flow rate (ml/min)	System suitability results	
		USP Plate Count	USP Tailing
1	0.8	7036	1.3
2	1	6089	1.2
3	1.2	6998	1.3

Table 13: Showing system suitability results for Teneeligiptin

S.No	Change in organic composition in the mobile phase	System suitability results	
		USP Plate Count	USP Tailing
1	5 % less	6232	1.4
2	*Actual	4668	1.3
3	5 % more	6387	1.4

Table 14: Showing system suitability results for Metformin

S.No	Change in organic composition in the mobile phase	System suitability results	
		USP Plate Count	USP Tailing
1	5 % less	5437	1.3
2	*Actual	6089	1.2
3	5 % more	4817	1.2

4. Conclusion

A new method was established for simultaneous estimation of Teneeligiptin and Metformin by RP-HPLC method. The chromatographic conditions were successfully developed for the separation of Teneeligiptin and Metformin by using ThermoSilC18 column (4.0×125mm) 5 μ , flow rate was 1ml/min, mobile phase ratio was (70:30 v/v) methanol: Sodium acetate buffer pH 3 (pH was adjusted with orthophosphoric acid), detection wavelength was 252nm. The instrument used was WATERS HPLC Auto Sampler, Separation module 2690, photo diode array detector 996, Empower-software version-2. The retention times were found to be 2.566 mins and 3.417 mins. The % purity of Teneeligiptin and Metformin was found to be 101.27% and 99.97% respectively. The system suitability parameters for Teneeligiptin and Metformin such as theoretical plates and tailing factor were found to be 4668, 1.3 and 6089 and 1.2, the resolution was found to be 6.0. The analytical method was validated according to ICH guidelines (ICH, Q2 (R1)). The linearity study on Teneeligiptin and Metformin was found in concentration range of 5 μ g-25 μ g and 50 μ g-250 μ g and correlation coefficient (r^2) was found to be 0.999 and 0.999, % recovery was found to be 99.56% and 99.48%, %RSD for repeatability was 0.86 and 0.82, % RSD for intermediate precision was 0.44 and 0.19 respectively. The precision study was precise, robust, and repeatable. LOD value was 3.17 and 5.68, and LOQ value was 0.0172 and 0.2125 respectively. Hence the suggested RP-HPLC method can be used for routine analysis of Teneeligiptin and Metformin in API and Pharmaceutical dosage form.

5. References

- [1] Raja et al., Determination of metformin in pharmaceutical preparations using potentiometry, spectrofluorimetry and UV-visible spectrophotometry. 1999; 378(1-3): 299-311.
- [2] Ramzia El-Bagary I, EhabElkady F, BassamAyoub M. Spectrofluorometric and Spectrophotometric Methods for the Determination of Sitagliptin in Binary Mixture with Metformin and Ternary Mixture with Metformin and Sitagliptin Alkaline Degradation Product. Sci.2011; 7(1): 62-69.
- [3] Douglas A.Skoog, F. James Holler & Stanley R. Crouch. Instrumental analysis, India edition, 2007, pg: 13-14.
- [4] Gurdeep R. Chatwal& Sham K. Anand. Instrumental Methods Of Chemical Analysis (Analytical Chemistry) ,pg: 2.566-2.567.
- [5] Ahuja S & Dong MW. Handbook of Pharmaceutical Analysis by HPLC. 1st edition, Academic Press Publisher.UK 2005.
- [6] SatinderAhuja& Neil Jespersen. Modern Instrumental Analysis 47 (Comprehensive Analytical Chemistry) volume-47, pg-7-8.
- [7] Willard HH, Merrit LL, Dean JA, Settle FA. Instrumental methods of analysis, CBS Publishers and Distributors, New Delhi, 6th edition, 1986, 1-15.
- [8] Douglas A. Skoog, F. James Holler, Timothy A. Nieman. Principles of instrumental analysis, Saunders Golden Sun burst Series, Philadelphia, 2ndedition, 1980, 725-760.
- [9] David G.Watson. Pharmaceutical Analysis, A text book for Pharmacy students and Pharmaceutical Chemists, Harcourt Publishers Limited, 2nd Edition, 1999, 221-232, 267-311.
- [10] Snyder LR, Kirkland JJ, Joseph LG. Practical HPLC Method Development, Wiley Inter

Science, New York, 2nd Edition, 1997, 1-56,
234-289,685-712

- [11]Beckett A.H, J.B. Stenlake. Practical
Pharmaceutical Chemistry, 4th edition. C.B.S.
Publications, Pg. No.53-62.
- [12]Remington's The Science and Practise of
Pharmacy, 20th Edition, 2000.