

From Ritual Supremacy to Scientific Evidence: A Comparative Review of Sacred Indian Plants Highlighting the Multifaceted Benefits of Lotus

K. Siva Prasad^{*1}, Venkata Veeranjanyulu I², V Santhoshi Pravallika², T. Veeraraghavulu¹, B. Siva Prasad¹, K.L Shireesha Rao³, T. Vijaya⁴, Ch. V Vasantha Lakshmi⁵

¹KRK Agri Services, Reddivaripalle, Rayachoti, Annamaya Dist., Andhra Pradesh.

²Assistant Professor, Aditya University, Andhra Pradesh.

³Faculty, Sai Ram Degree College, Kodumur, Kurnool, Andhra Pradesh.

⁴Professors, Department of Botany, Sri Venkateswara University, Tirupati, Andhra Pradesh, India

⁵Research Scholar, Department of Botany, Sri Venkateswara University, Tirupati, Andhra Pradesh, India

Corresponding E-mail: koyasiva1985@gmail.com

Received: 08 Sept 2025 | Revised: 22 Oct 2025 | Accepted: 11 Dec 2025 | Published: 23 Jan 2026

Abstract:

Traditional Indian knowledge systems describe a hierarchical reverence of sacred plants, in which ritual supremacy is often associated with perceived therapeutic superiority. Among these, blue lotus (*Nymphaea nouchali*; blue water lily) occupies a culturally exalted position and is frequently regarded as an apex offering in devotional practices, despite long-standing taxonomic confusion with true lotus (*Nelumbo nucifera*). This review critically evaluates selected sacred Indian plants—*Nymphaea nouchali* (blue lotus), *Nelumbo nucifera* (sacred lotus), *Pandanus odorifer* (pagada flower), *Datura metel* (thorn apple), *Raphanus sativus* (radish), *Acacia nilotica* (gum arabic tree), *Achyranthes aspera* (prickly chaff flower), *Desmostachya bipinnata* (kusha grass), and *Prosopis cineraria* (shami tree) by integrating ethnobotanical knowledge with contemporary pharmacognostic, phytochemical, and pharmacological evidence. Emphasis is placed on the therapeutic relevance of *Nymphaea* species, traditionally employed in Ayurveda, Siddha, and folk medicine as cooling agents, nervine tonics, sedatives, cardiotonics, and anti-inflammatory remedies. Blue lotus exhibits a distinct pharmacological profile characterized by central nervous system—modulating, anxiolytic, antioxidant, anti-inflammatory, and cardioprotective activities, attributed to aporphine alkaloids, flavonoids, phenolic compounds, glycosides, and tannins. Comparative evaluation indicates that while *Nelumbo nucifera* demonstrates broader nutraceutical utility, *Nymphaea* species occupy a more specialized yet culturally supreme position with pronounced neuropharmacological and cooling properties. This review reinterprets sacred plant hierarchies through an evidence-based lens, positioning blue lotus as a culturally apex but scientifically underexplored medicinal plant with promising translational potential.

Keywords: Sacred plants, lotus varieties, *Nymphaea nouchali*, *Nelumbo nucifera*, blue lotus, ethnomedicine, pharmacognosy, phytochemistry, traditional plant hierarchy, nutraceuticals

Introduction

Concept of Sacred Plant Hierarchies in Indian Traditions

Indian traditional knowledge systems, including Ayurveda, Siddha, and diverse folk practices, demonstrate a profound integration of spirituality and medicine, wherein plants are revered not only for their therapeutic value but also for their ritualistic and symbolic significance. Within this framework, certain plants occupy hierarchically elevated positions and are collectively referred to as sacred plants. These hierarchies are preserved through ritual practices, temple traditions, oral narratives, and classical literature, reflecting a cumulative cultural understanding of plant utility, purity, and ecological relevance [1,2]. The reverence accorded to these plants often transcends their biological identity, embedding them deeply within religious observances, seasonal rituals, and life-cycle ceremonies.

Link between Ritual Supremacy and Perceived Therapeutic Superiority: The hierarchical placement of sacred plants is not arbitrary; rather, it is frequently associated with perceived therapeutic superiority or broader medicinal utility. Plants used as primary ritual offerings are often those believed to possess

cooling, purifying, protective, or restorative properties, suggesting an early empirical recognition of their health benefits [3]. This convergence of ritual supremacy and medicinal importance indicates that sacred plant hierarchies may represent a symbolic codification of therapeutic efficacy, safety, and availability. Such associations are particularly evident in plants employed both in religious rites and in traditional healing practices, reinforcing the notion that ritual importance may reflect accumulated ethnomedical experience [4].

Historical Confusion between True Lotus and Blue Lotus

Among sacred aquatic plants, the lotus occupies a central position in Indian culture; however, considerable historical and taxonomic ambiguity exists between the true lotus, *Nelumbo nucifera* (sacred lotus), and the blue lotus or water lily, *Nymphaea nouchali* (blue water lily). Although these species belong to distinct botanical families—Nelumbonaceae and Nymphaeaceae, respectively—they have long been symbolically equated in art, iconography, and ritual contexts [5,6]. In several devotional traditions, blue lotus is regarded as an apex offering due to its cooling nature, aesthetic rarity, and association with

mental calmness and spiritual purity, despite being less extensively investigated scientifically than *Nelumbo nucifera*. This taxonomic conflation has contributed to inconsistencies in ethnopharmacological documentation, therapeutic interpretation [7].

Rationale for a Comparative Scientific Reinterpretation

Modern pharmacognosy and phytopharmacology provide tools to critically reassess traditional plant hierarchies through evidence-based approaches. While *Nelumbo nucifera* has been widely studied for its nutritional value, safety, and broad-spectrum pharmacological activities, *Nymphaea nouchali* remains comparatively underexplored despite its prominent cultural status and traditional medicinal applications [8,9]. Additionally, several other sacred plants occupying important hierarchical positions such as *Pandanus odorifer*, *Datura metel*, *Achyranthes aspera*, and *Prosopis cineraria* exhibit diverse medicinal properties but vary considerably in terms of therapeutic scope, toxicity, and scientific validation [10–12]. A comparative scientific reinterpretation is therefore necessary to distinguish symbolic supremacy from pharmacological potential and to identify plants with genuine translational value.

Ethnobotanical Basis of Sacred Plant Hierarchies in India



Sacred Plants in Indian Ethnomedicine and Ritual Practice

Ethnobotany in India represents a continuous knowledge system in which plant use is shaped by geography, ecology, spirituality, and long-term medicinal experience. Sacred plants form a distinct ethnobotanical category, characterized by their repeated use in rituals, temple offerings, seasonal festivals, and traditional healing practices. Unlike purely medicinal plants selected solely for therapeutic outcomes, sacred plants occupy a dual role symbolic and pharmacological reflecting an integrated worldview where health, spirituality, and nature coexist [13,14]. Hierarchical reverence among sacred plants is evident across regions and traditions, particularly in South India, where oral verses, temple customs, and household worship practices describe graded importance among flowers, leaves, grasses, and trees. Such hierarchies are not merely theological constructs but appear to encode empirical observations related to plant safety, availability, sensory attributes, and perceived physiological effects, especially cooling, calming, or protective properties

Hierarchical Logic:

From Ritual Use to Therapeutic Perception

In traditional Indian practice, plants considered suitable for higher ritual offerings are typically those regarded as pure, non-toxic, aesthetically refined, and physiologically gentle. This observation aligns with the pharmacognostic principle that long-standing use often correlates with safety and tolerability. Sacred plant hierarchies therefore appear to function as cultural filters that prioritize plants with minimal adverse effects and broad therapeutic applicability [15, 16]. For example, grasses such as

Desmostachya bipinnata (kusha grass) are ritually indispensable due to their perceived purifying properties and diuretic action, whereas trees such as *Prosopis cineraria* (shami tree) symbolize resilience and metabolic balance. Conversely, plants like *Datura metel* (thorn apple), despite ritual importance, are used with caution due to known toxicity—highlighting an implicit awareness of therapeutic risk–benefit balance in traditional hierarchies [17].

Central Position of Aquatic Sacred Plants



Aquatic plants occupy a uniquely elevated position within sacred plant hierarchies, largely due to their association with purity, regeneration, and mental tranquility. Among these, lotus-like flowers are considered superior ritual offerings, symbolizing detachment, clarity, and spiritual elevation. However, ethnobotanical records reveal that the term “lotus” has historically encompassed botanically distinct taxa, most notably *Nelumbo nucifera* (sacred lotus) and *Nymphaea nouchali* (blue lotus) [18]. In several South Indian devotional traditions, blue lotus (*Nymphaea nouchali*) is regarded as an apex offering, often considered superior to white or pink lotus forms. This preference is attributed to its intense cooling effect, soothing fragrance, and perceived ability to calm the mind and senses—qualities highly valued in ritual contexts aimed at mental purity and spiritual focus [19].

Ethnomedicinal Role of Blue Lotus (*Nymphaea nouchali*)

Ethnomedicinal documentation indicates that *Nymphaea nouchali* has been traditionally used in Ayurveda, Siddha, and regional folk systems as a cooling agent, sedative, nervine tonic, cardiogenic, and anti-inflammatory remedy. Decoctions and pastes prepared from its flowers, rhizomes, and seeds have been employed in the management of insomnia, anxiety, burning sensations, fever, and cardiovascular discomfort [20,21].



The prominent placement of blue lotus in sacred hierarchies may therefore reflect its consistent association with neurocalming and cooling physiological effects, distinguishing it from other sacred plants that primarily exert digestive, antimicrobial, or metabolic actions. This ethnobotanical prominence contrasts with the relatively limited modern pharmacological exploration of *Nymphaea* species, creating a significant knowledge gap between traditional valuation and scientific validation.

Comparative Ethnobotanical Perspective with Other Sacred Plants:

Other plants included in sacred hierarchies such as

Pandanus odorifer (pagada flower), *Achyranthes aspera* (uttareni), *Acacia nilotica* (tummi), and *Raphanus sativus* (mulaka) are valued for specific ritual or medicinal roles but generally lack the broad calming and central nervous system-oriented symbolism associated with blue lotus. Their hierarchical placement appears to be linked to functional specificity, whereas *Nymphaea* species are associated with holistic mental and physiological balance [22,23].

Ethnobotanical Implications for Scientific Reassessment

The ethnobotanical evidence strongly suggests that sacred plant hierarchies are not purely symbolic but represent cumulative experiential knowledge regarding plant effects, safety, and suitability for repeated use. Blue lotus (*Nymphaea nouchali*), positioned as culturally apex, exemplifies a plant whose traditional prominence exceeds its current scientific documentation. This disparity underscores the need for systematic pharmacognostic, phytochemical, pharmacological reassessment to validate traditional claims and identify translational opportunities.

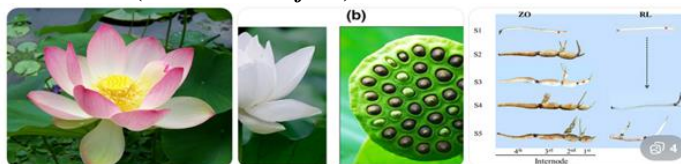
Botanical Identity and Taxonomic Clarification of Lotus Species

Importance of Botanical Authentication in Sacred Plants

Accurate botanical identification forms the cornerstone of pharmacognostic evaluation and ethnopharmacological validation. In the context of sacred plants, misidentification can lead not only to therapeutic inconsistency but also to misinterpretation of traditional knowledge systems. Sacred aquatic plants commonly referred to as “lotus” exemplify this challenge, as historical, ritualistic, and artistic representations have frequently conflated botanically distinct taxa under a single cultural identity [24,25]. Such taxonomic ambiguity complicates phytochemical standardization, pharmacological assessment, and clinical translation.



True Lotus (*Nelumbo nucifera*)



The true lotus, *Nelumbo nucifera* (sacred lotus), belongs to the family Nelumbonaceae and is widely distributed across Asia. Botanically, it is characterized by emergent leaves with a hydrophobic surface, large solitary flowers borne above the water surface, and a distinctive conical seed receptacle containing embedded seeds. The rhizomes are thick, elongated, and rich in starch, contributing to the plant's extensive nutritional and medicinal utility [26]. Pharmacognostically, *Nelumbo nucifera* is well documented, with standardized macroscopic and microscopic features established for its flowers, leaves, seeds, and rhizomes. Its broad acceptance as a safe, edible, and medicinal plant has led to extensive International Journal of Medicine and Pharmaceutical Research

investigation of its phytochemical constituents and pharmacological activities, positioning it as a benchmark species among sacred plants [27].

Blue lotus, *Nymphaea nouchali* (blue water lily), belongs to the family Nymphaeaceae and is native to freshwater habitats across India and Southeast Asia. Unlike *Nelumbo*, *Nymphaea* species possess floating leaves with long petioles, flowers that rest on or slightly above the water surface, and a less conspicuous seed structure. These morphological distinctions are critical for accurate identification and authentication [28]. Despite its cultural prominence and placement as an apex offering in several devotional traditions, *Nymphaea nouchali* has received comparatively limited scientific attention. Ethnobotanical records, however, consistently describe its use as a cooling agent, sedative, nervine tonic, cardiogenic, and anti-inflammatory remedy, suggesting a distinct therapeutic orientation toward central nervous system modulation and cardiovascular balance [29].

Ethnobotanical Consequences of Taxonomic Conflation

The historical conflation of *Nelumbo nucifera* and *Nymphaea nouchali* has resulted in inconsistencies in traditional formulations, pharmacological interpretation, and scientific reporting. In several classical texts and ethnobotanical surveys, therapeutic claims attributed to “lotus” may correspond to either species, underscoring the need for precise botanical nomenclature in contemporary research [31]. Clarifying this distinction is essential for accurate correlation between traditional claims and experimental outcomes.

Rationale for Distinct Scientific Evaluation

While *Nelumbo nucifera* has emerged as a multipurpose nutraceutical and medicinal plant with broad-spectrum activity, *Nymphaea nouchali* represents a specialized medicinal resource, particularly valued for its cooling, neurocalming, and cardiogenic properties. Recognizing and respecting this distinction enables a more rational interpretation of sacred plant hierarchies and supports targeted pharmacological exploration of *Nymphaea* species as culturally apex yet scientifically underexplored plants.

Comparative Pharmacognostic Characteristics of Sacred Indian Plants



Importance of Pharmacognostic Evaluation

Pharmacognostic characterization is essential for the authentication, standardization, and quality control of medicinal plants. In the context of sacred plants, pharmacognosy provides a scientific framework to validate traditional claims and to differentiate closely related or symbolically conflated species. Parameters such as macroscopic characters, microscopic features, and powdered drug analysis form the basis for accurate botanical identification and prevention of adulteration [32,33]. This is particularly relevant for lotus species, where cultural

usage often overlooks botanical distinctions between *Nymphaea nouchali* and *Nelumbo nucifera*.

Macroscopic Characteristics

Macroscopic evaluation involves the assessment of observable morphological features such as shape, color, texture, odor, and taste.

Blue Lotus (*Nymphaea nouchali*)

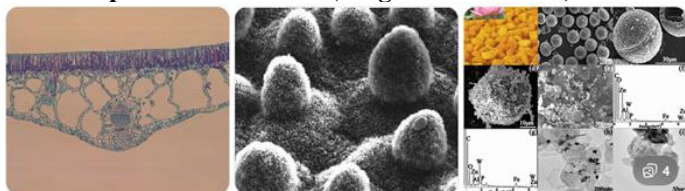
- Flowers: Blue to violet, mildly fragrant, floating or slightly emergent
- Leaves: Circular, floating, smooth margins
- Rhizome: Short, spongy, brownish
- Taste: Mildly bitter and astringent

Traditionally associated with cooling and calming sensory perception, supporting its ethnomedicinal role.

Sacred Lotus (*Nelumbo nucifera*)

- Flowers: White to pink, large, strongly fragrant, emergent
- Leaves: Large, peltate, emergent with hydrophobic surface
- Rhizome: Thick, elongated, starchy
- Taste: Sweet to bland (rhizome, seeds)

Microscopic Characteristics (Diagnostic Features)



Powder Drug Analysis

Powder microscopy is essential for detecting adulteration in dried plant materials used in traditional formulations.

Diagnostic powder characters of *Nymphaea nouchali*:

- Fragmented spiral vessels
- Thin-walled parenchyma
- Few starch grains
- Scattered calcium oxalate crystals

These features differ from *Nelumbo nucifera*, which shows abundant starch grains and thick-walled sclereids, reflecting its higher nutritional and storage function [35].

Comparative Pharmacognostic Data of Sacred Plants

Relevance to Sacred Plant Hierarchies

Pharmacognostic evaluation reveals that plants occupying higher positions in sacred hierarchies often demonstrate structural adaptations linked to safety and repeated use, such as reduced toxic inclusions and balanced phytochemical storage. Blue lotus (*Nymphaea nouchali*), despite limited edibility, exhibits anatomical features consistent with neurocalming and cooling effects, supporting its cultural elevation. In contrast, plants like *Datura metel*, though sacred, exhibit distinct microscopic markers of toxicity, reinforcing the cautious traditional use associated with them [36].

Implications for Standardization and Quality Control

Clear pharmacognostic differentiation between sacred plants especially between *Nymphaea* and *Nelumbo* is essential for:

- Correct botanical sourcing
- Avoidance of adulteration
- Reliable pharmacological outcomes

- Regulatory acceptance of herbal formulations

This forms a critical foundation for subsequent phytochemical and pharmacological investigations.

Comparative Pharmacological Activities of Sacred Indian Plants

Rationale for Comparative Pharmacological Evaluation

Pharmacological comparison of sacred plants provides a scientific basis to reinterpret traditional hierarchies that were historically defined through ritual prominence and empirical healing experience. While cultural reverence often reflects perceived therapeutic value, modern pharmacology enables systematic validation of these claims through experimental and mechanistic studies. Sacred Indian plants exhibit a wide spectrum of biological activities, ranging from central nervous system modulation and cardioprotection to metabolic regulation and antimicrobial effects. Among these, lotus species particularly blue lotus occupies a distinctive position due to their pronounced neurocalming and cooling properties [37,38].

Central Nervous System (CNS) Modulatory Activity



CNS modulation represents one of the most significant pharmacological attributes associated with blue lotus.

- *Nymphaea nouchali* (blue lotus) traditionally used as a sedative, anxiolytic, and nervine tonic. Experimental studies attribute these effects to aporphine alkaloids, flavonoids, and phenolic compounds, which modulate neurotransmission and reduce oxidative stress in neural tissues [39].
- *Nelumbo nucifera* (sacred lotus) Exhibits mild neuroprotective and antidepressant-like activity, largely secondary to its antioxidant and anti-inflammatory effects rather than direct sedative action [40].
- Other sacred plants such as *Datura metel* demonstrate CNS activity but are limited by narrow therapeutic windows and toxicity, restricting their safe medicinal application [41].

Interpretation:

The pronounced CNS-modulating profile of *Nymphaea nouchali* aligns with its cultural association with mental calmness and ritual purity.

Antioxidant and Anti-Inflammatory Activities

Oxidative stress and inflammation underlie numerous chronic diseases, and several sacred plants demonstrate protective effects against these processes.

- *Nymphaea nouchali* shows strong free-radical scavenging activity and inhibition of inflammatory mediators, supporting its traditional use in inflammatory conditions and febrile disorders [42].
- *Nelumbo nucifera* exhibits robust antioxidant activity across multiple plant parts (flowers, leaves, seeds, rhizomes), attributed to flavonoids, polyphenols, and alkaloids [43].

- *Achyranthes aspera* (uttareni) also demonstrates anti-inflammatory and antioxidant properties, particularly in renal and urinary disorders [44].

Comparative insight:

While both lotus species exhibit antioxidant activity, *Nelumbo nucifera* shows broader systemic effects, whereas *Nymphaea nouchali* demonstrates targeted neuro-anti-inflammatory action.

Cardioprotective and Cardiovascular Effects

Cardiotonic and cardioprotective activities are prominent features of several sacred plants. *Nymphaea nouchali* has been traditionally employed as a cardiotonic, with studies suggesting improvement in cardiac function through antioxidant and calcium-channel modulating effects [45].

- *Nelumbo nucifera* contributes to cardiovascular health by improving lipid profiles, reducing oxidative stress, and enhancing endothelial function [46].
- *Prosopis cineraria* (jammi) also exhibits antidiabetic and cardioprotective effects, though its activity is less extensively validated [47].

Antidiabetic and Metabolic Effects

- *Nelumbo nucifera* demonstrates significant antidiabetic and anti-obesity activity, supported by inhibition of carbohydrate-digesting enzymes and improvement in insulin sensitivity [48].
- *Nymphaea nouchali* shows moderate glucose-lowering effects, primarily through antioxidant mechanisms rather than direct metabolic enzyme inhibition [49].
- *Acacia nilotica* (tummi) also contributes to glycemic control via astringent and insulin-sensitizing effects [50].

Interpretation:

Metabolic regulation is a dominant strength of *Nelumbo nucifera*, whereas *Nymphaea nouchali* contributes indirectly through stress and inflammation reduction.

Antimicrobial and Protective Activities

Several sacred plants demonstrate antimicrobial and protective roles:

- *Pandanus odorifer* (pagada) exhibits antimicrobial and anti-inflammatory effects, supporting its ritual use in purification [51].
- *Nelumbo nucifera* shows antimicrobial activity against bacterial and fungal strains.
- *Nymphaea nouchali* displays moderate antimicrobial effects, complementing its anti-inflammatory and cooling actions [52].

Comparative Summary of Pharmacological Activities

Pharmacological Interpretation of Sacred Hierarchies

The comparative pharmacological evaluation reveals that sacred plant hierarchies reflect functional specialization rather than uniform medicinal superiority. Blue lotus (*Nymphaea nouchali*) emerges as a specialized neurocalming and cardiotonic plant, justifying its culturally apex position, whereas *Nelumbo nucifera* demonstrates multifaceted and nutraceutical dominance with broader therapeutic applicability. Other sacred plants contribute specific pharmacological roles but are limited by safety, scope, or evidence density.

Multifaceted Benefits of Lotus Species: Blue Lotus versus Sacred Lotus:

The concept of "lotus" in Indian traditions encompasses botanically distinct species that collectively contribute to ritual, medicinal, and nutritional practices. Among

these, blue lotus (*Nymphaea nouchali*; blue water lily) and sacred lotus (*Nelumbo nucifera*; sacred lotus) represent two complementary therapeutic paradigms.

Blue Lotus (*Nymphaea nouchali*): Culturally Apex and Neurocalming: Blue lotus occupies a culturally apex position in several devotional hierarchies, which correlates strongly with its cooling, sedative, and nervine tonic properties. Traditional systems describe its use in the management of anxiety, insomnia, mental agitation, burning sensations, and cardiac discomfort. These effects are attributed to aporphine alkaloids, flavonoids, phenolic compounds, glycosides, and tannins, which together contribute to central nervous system modulation, antioxidant defense, and cardiotonic activity [53-55]. The specialized therapeutic orientation of *Nymphaea nouchali* toward mental tranquility and neurophysiological balance explains its symbolic elevation in ritual contexts aimed at purification and calmness.

Sacred Lotus (*Nelumbo nucifera*): Multifunctional and Nutraceutical: In contrast, *Nelumbo nucifera* demonstrates broad-spectrum pharmacological and nutritional utility, with flowers, leaves, seeds, stamens, and rhizomes all contributing to medicinal applications. Sacred lotus exhibits antioxidant, anti-inflammatory, cardioprotective, antidiabetic, hepatoprotective, and anti-obesity activities, supported by bis-benzylisoquinoline alkaloids, flavonoids, polyphenols, and dietary fibers [56-58]. Due to its safety, edibility, and extensive experimental validation, *Nelumbo nucifera* functions as a therapeutic generalist and serves as a benchmark species for nutraceutical and functional food development.

Safety, Toxicity, and Translational Potential

Safety Profile of Lotus Species

Safety is a critical determinant of sustained ritual and medicinal use. Both *Nymphaea nouchali* and *Nelumbo nucifera* are traditionally regarded as safe and non-toxic when used appropriately, distinguishing them from several other sacred plants.

- Blue lotus (*Nymphaea nouchali*) is predominantly used in aqueous preparations and lacks potent toxic alkaloids, supporting its repeated use as a calming and cooling agent [59].
- Sacred lotus (*Nelumbo nucifera*) is widely consumed as food and medicine and exhibits excellent tolerability even with long-term use, enabling its incorporation into nutraceutical formulations [60].

In contrast, plants such as *Datura metel*, although sacred, possess significant toxicity, underscoring the risk-benefit awareness embedded within traditional hierarchies [61].

Translational and Therapeutic Potential

From a translational standpoint:

- *Nymphaea nouchali* shows promise as a natural neurocalming, anxiolytic, and cardiotonic agent, suitable for integrative management of stress-related and psychosomatic disorders.
- *Nelumbo nucifera* is well positioned for metabolic health, cardiovascular support, and functional food development, supported by extensive experimental and dietary evidence.

Challenges and Future Directions

Key challenges limiting clinical translation include:

- Scarcity of controlled clinical studies on *Nymphaea nouchali*
- Need for phytochemical standardization and marker-based quality control
- Dose optimization and long-term safety evaluation

Research Gaps and Future Perspectives

Despite the long-standing cultural, ethnomedicinal significance of sacred Indian plants, several critical research gaps remain, particularly with respect to blue lotus (*Nymphaea nouchali*), which occupies a culturally apex position but lacks proportional scientific exploration.



One of the primary gaps is the limited availability of systematic phytochemical profiling and mechanistic pharmacological studies on *Nymphaea nouchali*. While traditional literature consistently describes its sedative, cooling, nervine tonic, and cardiogenic properties, these claims remain largely supported by preliminary experimental or ethnobotanical evidence rather than well-designed in vivo and clinical studies. In contrast, *Nelumbo*

nucifera has been extensively studied, creating a clear imbalance between cultural prominence and scientific validation.

Another major limitation is the lack of standardized extracts, marker compounds, and quality-control parameters for *Nymphaea* species. Taxonomic ambiguity between lotus and water lily species further complicates reproducibility and translational research. Establishing authenticated botanical sources, phytochemical markers, and validated analytical methods is therefore essential for advancing *Nymphaea nouchali* from traditional use to evidence-based therapeutics.

Future research should focus on:

- Comprehensive phytochemical standardization of *Nymphaea nouchali*
- Mechanistic studies targeting central nervous system modulation and cardiogenic activity
- Toxicological and long-term safety evaluations
- Controlled clinical trials for stress-related, neuropsychological, and inflammatory disorders
- Comparative formulation development integrating *Nymphaea* and *Nelumbo* species

Such efforts would not only validate traditional hierarchies but also facilitate the integration of culturally revered plants into modern herbal, nutraceutical, and integrative healthcare systems.

Table.1: Key Morphological Differences between *Nelumbo* and *Nymphaea*

Feature	<i>Nelumbo nucifera</i>	<i>Nymphaea nouchali</i>
Family	Nelumbonaceae	Nymphaeaceae
Leaf position	Emergent above water	Floating on water
Flower position	Elevated above water	On or near water surface
Seed structure	Conical receptacle	Enclosed berry-like fruit
Edibility	High (rhizome, seeds)	Limited
Ritual status	Benchmark sacred plant	Culturally apex offering

Table.2: Microscopic examination provides diagnostic anatomical features useful for authentication.

Feature	<i>Nymphaea nouchali</i>	<i>Nelumbo nucifera</i>
Epidermis	Thin-walled cells	Thick cuticle
Stomata	Anomocytic	Anomocytic
Vascular bundles	Scattered, collateral	Well-developed
Calcium oxalate	Few crystals	Abundant
Aerenchyma	Prominent	Prominent

Table.3: Pharmacognostic Features of Selected Sacred Indian Plants

Plant	Part used	Key Diagnostic Features	Pharmacognostic Significance
<i>Nymphaea nouchali</i>	Flower, rhizome	Aerenchyma, anomocytic stomata	Cooling, sedative
<i>Nelumbo nucifera</i>	Flower, seed, rhizome	Starch-rich parenchyma	Nutraceutical
<i>Pandanus odorifer</i>	Flower	Volatile oil ducts	Fragrance, cooling
<i>Datura metel</i>	Leaf, seed	Glandular trichomes	Toxic alkaloids
<i>Achyranthes aspera</i>	Root, leaf	Crystal fibers	Anti-urolithiatic
<i>Desmostachya bipinnata</i>	Whole plant	Silica bodies	Diuretic
<i>Prosopis cineraria</i>	Bark, leaf	Fibrous tissue	Antidiabetic

Table.4: Comparative Pharmacological Activities of Sacred Indian Plants

Plant	CNS activity	Antioxidant	Anti-inflammatory	Cardioprotective	Antidiabetic	Safety
<i>Nymphaea nouchali</i>	+++	++	++	++	+	High
<i>Nelumbo nucifera</i>	++	+++	+++	+++	+++	Very high
<i>Achyranthes aspera</i>	+	++	++	+	+	High
<i>Prosopis cineraria</i>	+	++	++	++	++	High
<i>Datura metel</i>	+++	+	+	+	-	Low

Table.5: Synthesis of Multifaceted Benefits

Parameter	<i>Nymphaea nouchali</i>	<i>Nelumbo nucifera</i>
Cultural status	Culturally apex	Benchmark sacred plant
Primary action	Neurocalming, cooling	Systemic, nutraceutical
CNS effects	Strong	Moderate
Metabolic effects	Limited	Extensive
Edibility	Restricted	High
Research density	Limited	Extensive

This synthesis highlights that sacred plant hierarchies reflect functional specialization rather than absolute medicinal superiority, with blue lotus excelling in neurocalming roles and sacred lotus offering comprehensive physiological benefits.

Conclusion

Traditional Indian sacred plant hierarchies represent a sophisticated synthesis of spirituality, empirical observation, and therapeutic reasoning. This review demonstrates that ritual supremacy within these hierarchies is not arbitrary but often reflects functional specialization, safety, and perceived physiological efficacy. Among the sacred plants evaluated, blue lotus (*Nymphaea nouchali*) emerges as a culturally apex species, particularly valued for its neurocalming, cooling, and cardiogenic properties, despite being scientifically underexplored. In contrast, sacred lotus (*Nelumbo nucifera*) exhibits multifaceted pharmacological and nutraceutical benefits, supported by extensive experimental validation and widespread dietary use. The comparative analysis presented in this review highlights that sacred plant hierarchies encode complementary medicinal roles rather than absolute superiority, with *Nymphaea* species excelling in mental and emotional balance and *Nelumbo* species offering broad systemic health benefits. By bridging ritual symbolism with contemporary pharmacognostic, phytochemical, and pharmacological evidence, this review provides a rational reinterpretation of sacred Indian plant hierarchies. It positions blue lotus as a culturally exalted yet scientifically promising medicinal plant, warranting focused research, standardization, and clinical validation. Such an evidence-based approach can support the sustainable utilization of sacred plants and their meaningful integration into modern herbal therapeutics, nutraceutical development, and integrative healthcare practices.

References

- [1] Sharma PV. *Dravyaguna Vijnana*. Vol 1. Varanasi: Chaukhambha Bharati Academy; 2005.
- [2] Jain SK. *Medicinal Plants*. New Delhi: National Book Trust; 2010.
- [3] Heinrich M, Barnes J, Gibbons S, Williamson EM. *Fundamentals of Pharmacognosy and Phytotherapy*. 2nd ed. Edinburgh: Churchill Livingstone; 2012.
- [4] Warriar PK, Nambiar VPK, Ramankutty C. *Indian Medicinal Plants*. Chennai: Orient Longman; 1996.
- [5] Cook CDK. *Aquatic Plant Book*. The Hague: SPB Academic Publishing; 1996.
- [6] Mabberley DJ. *Mabberley's Plant-book*. 4th ed. Cambridge: Cambridge University Press; 2017.
- [7] Nadkarni AK. *Indian Materia Medica*. Mumbai: Popular Prakashan; 2009.
- [8] Sridhar KR, Bhat R. Lotus (*Nelumbo nucifera*)—a nutraceutical plant. *J Agric Food Chem*. 2007; 55(9):3455–3461.
- [9] Kirtikar KR, Basu BD. *Indian Medicinal Plants*. Dehradun: International Book Distributors; 2006.
- [10] Mukherjee PK. *Quality Control and Evaluation of Herbal Drugs*. Amsterdam: Elsevier; 2019.
- [11] Gupta AK, Tandon N, Sharma M. *Reviews on Indian Medicinal Plants*. Vol 3. New Delhi: ICMR; 2004.
- [12] Singh MP, Panda H. *Medicinal Herbs with Their Formulations*. Delhi: Daya Publishing House; 2005.
- [13] Jain SK. *Ethnobotany and medicinal plants of Indian subcontinent*. New Delhi: Scientific Publishers; 1991.
- [14] Heinrich M, Barnes J, Gibbons S, Williamson EM. *Fundamentals of Pharmacognosy and Phytotherapy*. 2nd ed. Edinburgh: Churchill Livingstone; 2012.
- [15] Sharma PV. *Dravyaguna Vijnana*. Vol 1. Varanasi: Chaukhambha Bharati Academy; 2005.
- [16] Mukherjee PK. *Quality Control and Evaluation of Herbal Drugs*. Amsterdam: Elsevier; 2019.
- [17] Nadkarni AK. *Indian Materia Medica*. Mumbai: Popular Prakashan; 2009.
- [18] Cook CDK. *Aquatic Plant Book*. The Hague: SPB Academic Publishing; 1996.
- [19] Warriar PK, Nambiar VPK, Ramankutty C. *Indian Medicinal Plants*. Chennai: Orient Longman; 1996.
- [20] Kirtikar KR, Basu BD. *Indian Medicinal Plants*. Dehradun: International Book Distributors; 2006.
- [21] Gupta AK, Tandon N, Sharma M. *Reviews on Indian Medicinal Plants*. Vol 3. New Delhi: ICMR; 2004.
- [22] Singh MP, Panda H. *Medicinal Herbs with Their Formulations*. Delhi: Daya Publishing House; 2005.
- [23] Bhattacharjee SK. *Handbook of Medicinal Plants*. Jaipur: Pointer Publishers; 2008.
- [24] Mabberley DJ. *Mabberley's Plant-book*. 4th ed. Cambridge: Cambridge University Press; 2017.
- [25] Cook CDK. *Aquatic Plant Book*. The Hague: SPB Academic Publishing; 1996.
- [26] Sridhar KR, Bhat R. Lotus (*Nelumbo nucifera*)—a nutraceutical plant. *J Agric Food Chem*. 2007;55(9):3455–3461.
- [27] Chen S, Fang L, Xi H, et al. Chemical constituents and pharmacological activities of lotus. *Food Chem*. 2019; 289: 56–68.
- [28] Kirtikar KR, Basu BD. *Indian Medicinal Plants*. Dehradun: International Book Distributors; 2006.
- [29] Nadkarni AK. *Indian Materia Medica*. Mumbai: Popular Prakashan; 2009.
- [30] Gupta AK, Tandon N, Sharma M. *Reviews on Indian Medicinal Plants*. Vol 3. New Delhi: ICMR; 2004.
- [31] Jain SK. *Ethnobotany and medicinal plants of Indian subcontinent*. New Delhi: Scientific Publishers; 1991.
- [32] Trease GE, Evans WC. *Pharmacognosy*. 16th ed. London: Saunders Elsevier; 2009.

- [33] Mukherjee PK. *Quality Control and Evaluation of Herbal Drugs*. Amsterdam: Elsevier; 2019.
- [34] Metcalfe CR, Chalk L. *Anatomy of the Dicotyledons*. Vol 1. Oxford: Clarendon Press; 1983.
- [35] Wallis TE. *Textbook of Pharmacognosy*. 5th ed. New Delhi: CBS Publishers; 2005.
- [36] Nadkarni AK. *Indian Materia Medica*. Mumbai: Popular Prakashan; 2009.
- [37] Heinrich M, Barnes J, Gibbons S, Williamson EM. *Fundamentals of Pharmacognosy and Phytotherapy*. 2nd ed. Edinburgh: Churchill Livingstone; 2012.
- [38] Sharma PV. *Dravyaguna Vijnana*. Varanasi: Chaukhambha Bharati Academy; 2005.
- [39] Zhang Y, Shi S, Wang Y, Huang K. Neuroprotective effects of aporphine alkaloids: a review. *Phytother Res*. 2018; 32(10):1955–1968.
- [40] Chen S, Fang L, Xi H, et al. Chemical constituents and pharmacological activities of lotus. *Food Chem*. 2019; 289: 56–68.
- [41] Nadkarni AK. *Indian Materia Medica*. Mumbai: Popular Prakashan; 2009.
- [42] Gupta AK, Tandon N, Sharma M. *Reviews on Indian Medicinal Plants*. Vol 3. New Delhi: ICMR; 2004.
- [43] Sridhar KR, Bhat R. Lotus (*Nelumbo nucifera*) a nutraceutical plant. *J Agric Food Chem*. 2007;55(9):3455–3461.
- [44] Singh MP, Panda H. *Medicinal Herbs with Their Formulations*. Delhi: Daya Publishing House; 2005.
- [45] Kirtikar KR, Basu BD. *Indian Medicinal Plants*. Dehradun: International Book Distributors; 2006.
- [46] Mukherjee PK. *Quality Control and Evaluation of Herbal Drugs*. Amsterdam: Elsevier; 2019.
- [47] Jain SK. *Medicinal Plants*. New Delhi: National Book Trust; 2010.
- [48] Bhattacharjee SK. *Handbook of Medicinal Plants*. Jaipur: Pointer Publishers; 2008.
- [49] Warriar PK, Nambiar VPK, Ramankutty C. *Indian Medicinal Plants*. Chennai: Orient Longman; 1996.
- [50] Gupta R, Bajpai KG, Johri S, Saxena AM. An overview of Indian novel traditional medicinal plants with antidiabetic potential. *Afr J Tradit Complement Altern Med*. 2008;5(1):1–17.
- [51] Nadkarni KM. *Indian Plants and Drugs*. New Delhi: Asiatic Publishing House; 2007.
- [52] Metcalfe CR, Chalk L. *Anatomy of the Dicotyledons*. Oxford: Clarendon Press; 1983.
- [53] Kirtikar KR, Basu BD. *Indian Medicinal Plants*. Dehradun: International Book Distributors; 2006.
- [54] Nadkarni AK. *Indian Materia Medica*. Mumbai: Popular Prakashan; 2009.
- [55] Zhang Y, Shi S, Wang Y, Huang K. Neuroprotective effects of aporphine alkaloids: a review. *Phytother Res*. 2018; 32(10):1955–1968.
- [56] Sridhar KR, Bhat R. Lotus (*Nelumbo nucifera*) a nutraceutical plant. *J Agric Food Chem*. 2007; 55(9): 3455–3461.
- [57] Chen S, Fang L, Xi H, et al. Chemical constituents and pharmacological activities of lotus. *Food Chem*. 2019; 289:56–68.
- [58] Mukherjee PK. *Quality Control and Evaluation of Herbal Drugs*. Amsterdam: Elsevier; 2019.
- [59] Warriar PK, Nambiar VPK, Ramankutty C. *Indian Medicinal Plants*. Chennai: Orient Longman; 1996.
- [60] Bhattacharjee SK. *Handbook of Medicinal Plants*. Jaipur: Pointer Publishers; 2008.
- [61] Heinrich M, Barnes J, Gibbons S, Williamson EM. *Fundamentals of Pharmacognosy and Phytotherapy*. 2nd ed. Edinburgh: Churchill Livingstone; 2012.

Source of Support: Nil. Conflicts of Interest: None
